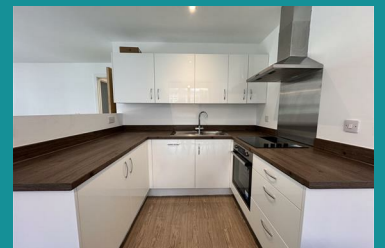




1 Cow Lane, Salford, M5 4NB
£1,500 Per Month



**** SECURE ALLOCATED PARKING SPACE INCLUDED ** DEPOSIT FREE OPTION AVAILABLE **** Available Immediately. The Landmark development in Salford is a purpose built development on the fringes of Manchester city centre and a short walk from the delightful Middlewood Locks region. This spacious three-bedroom apartment offers two floors of high quality accommodation and is within easy reach of Salford Quays, transport links and Regent Road Retail Park. The property includes one allocated parking space and boasts its own private balcony. It also shares access to a communal courtyard, on site concierge service and gym. With three well-proportioned bedrooms, the apartment is perfect for both families or two sharers seeking a spacious home in a convenient area **** PLEASE NOTE, THIS PROPERTY DOES NOT HAVE AN HMO LICENCE AND IS, THEREFORE, NOT SUITABLE FOR THREE OR MORE SHARERS UNLESS IT'S A FAMILY **** EPC rating C. Council tax band D.



- Maisonette Apartment with Two Floors
- Two Private Entrance Points
- Three Double Bedrooms
- Secure Underground Parking Space
- Available Immediately
- Balcony + Gated Patio Area
- Close to Manchester City Centre & Salford Quays
- On Site Residents Gym
- Deposit Free Option Available
- Part Furnished Accommodation